



FACT SHEET

WWW.LOIRIENMARA.COM



CONSERVE

A WAY OF LIFE

This land holds stories older than time. The rhythm of migration, the wisdom of the Maasai, the silent presence of majestic trees. To be here is to be part of something larger—to protect, to restore, to belong.



NURTURE

THE ART OF WELL-BEING

A slow morning, the scent of wild sage in the breeze, warmth from a fire lit long after the conversation ended. Here, wellness is instinctual—crafted in stillness, in movement, in the spaces between.



EXPLORE

A SPARK OF CURIOSITY

A path unknown, the hush of dawn before the first tracks appear. Walk alongside a rhino. Follow the call of a bird as it carries through the acacia. Step deeper into the wild, where the horizon is endless, and the journey transformative.



LOCATION IS EVERYTHING

SET WITHIN THE PRIVATE PARTAKILAT CONSERVANCY, LOIRIEN MARA IS PERCHED ON THE OLOLOLO ESCARPMENT, OVERLOOKING THE MARA TRIANGLE IN THE HEART OF THE MAASAI MARA, KENYA.

PARTAKILAT CONSERVANCY - A NATURAL BUFFER AND GATEWAY

Strategically positioned, Partakilat Conservancy serves as a vital buffer between the Mara Triangle and Trans Mara, protecting ancient migration corridors and supporting conservation at scale.

As a guest, you'll experience the privacy of an exclusive retreat while being seamlessly connected to the rich tapestry of the surrounding landscapes.

THE ELEMENTS

- 📍 Altitude: 6,200 ft (1,890m) – highland setting, cooler nights, clearer skies
- 📍 Equatorial Climate: Balanced daylight year-round with warm days, crisp nights.
- 📍 Comfortable Climate: Ideal for wildlife exploration and relaxation, year-round.
- 📍 Malaria-Free Zone

THE SEASONS

The Maasai Mara follows its own rhythm—a cycle of seasons shaped by the rains, the movement of wildlife, and the ever-changing landscape.

- Warm & Dry (January–February) – Sunny days, crisp horizons, wildlife gathering at waterholes.
- Green Season (March–May) – Lush landscapes, dramatic skies, birthing season.
- Dry Season (June–October) – Clear skies, peak wildlife, golden plains.
- Short Rains (November–December) – Fresh greens, migratory birds, cooler air.

📍 The Great Migration (July–September) – Vast herds crossing the Mara River, predators in pursuit, and nature at its most dramatic. LOIRIEN's vantage point offers a front-row seat to this spectacle.

PRIVATE AIR TRAVEL

LOIRIEN Air Adventures offers private charters, and helicopters for seamless arrivals. Availability, details, and rates upon request.



COORDINATES: 1.4060° S, 34.9200° E

GOOGLE MAPS LINK:
[HTTPS://MAPS.GOOGLE.COM/?Q=1.4060S,34.9200E](https://maps.google.com/?q=1.4060S,34.9200E)

TRAVEL NOTES - HOW TO GET HERE

By Air:
International Gateways:
Jomo Kenyatta International Airport (NBO): Nairobi's primary international airport, offering extensive global connections.

From Nairobi: Daily flights from Wilson Airport (~40-60 minutes)
From Mombasa: Direct flights available (~2 hours)
Other Departure Points: Well connected to other safari destinations—consult with your concierge for options.

- 📍 Nearest Airstrip: Kichwa Tembo (15 km / ~20-30 min private transfer).
- 📍 Alternative Airstrip: Mara Serena (1h transfer time)
- 📍 Helicopter Landing: On-site, with prior arrangement.

Luggage Guidelines: Most airlines recommend soft-sided bags up to 15 kg (33 lbs) per person.

Private Charters & Helicopters:
For those seeking direct, seamless arrivals, private charters can be arranged from JKIA or other locations. Availability, pricing, and logistics can be coordinated with your concierge.

Private Transfers: Upon arrival in the Mara, a private stretch Safari Land Cruiser ensures a smooth and scenic transfer to LOIRIEN.

- By Road:
- From Nairobi: Approximately 270 km (~6-7 hours)
 - Proximity to Tanzanian Border: Approximately 50 km

THE VILLAS ✦

LOIRIEN VILLA

877M² (9,440 SQ.FT)
3 EN-SUITE BEDROOMS

INSPIRED BY THE SACRED MAASAI OLIVE TREE &
THE GEM OF OUR COLLECTION

- Primary suite (95m² | 1,019 ft²) with walk-in wardrobe, deep soaking tub, private sauna & steam room
- Two guest suites (40m² | 430 ft² each), with spa-inspired bathrooms featuring rainfall showers
- Expansive living & dining area with a fireplace
- Beautifully appointed bar & wine cellar
- Entertainment & relaxation areas, including a TV & board game room
- Library & dedicated workspace
- Expansive terraces with multiple lounge seating areas & swing beds
- Secluded rooftop yoga deck & meditation lookouts
- Private infinity pool overlooking the Mara Triangle

NAIKA VILLA

225M² (2,422 SQ.FT)
2 EN-SUITE BEDROOMS

NAIKA MEANS "TUCKED UP," A VILLA DESIGNED
FOR QUIET RETREAT AMONG ANCIENT ACACIAS.

- Two en-suite primary suites, each with a lounge area, walk-in wardrobe & floor-to-ceiling glass windows and private access to a panoramic terrace
- Spa-inspired bathrooms with deep soaking tubs & rainfall showers
- Intimate living & dining areas with a fireplace
- State-of-the-art kitchen, designed for convenience or chef experience
- Vast outdoor lounge terraces with multiple seating areas & swing beds overlooking the Mara Triangle
- Lush garden spaces & secluded meditation areas
- Private pool

KULAAL VILLA

225M² (2,422 SQ.FT)
2 EN-SUITE BEDROOMS

INSPIRED BY THE BONFIRE, KULAAL VILLA IS A
GATHERING PLACE IN THE WILD, EMBRACED BY
LUSH GARDENS.

- Two en-suite primary suites, each with a lounge area, walk-in wardrobe & floor-to-ceiling glass windows and private access to a panoramic terrace
- Spa-inspired bathrooms with deep soaking tubs & rainfall showers
- Intimate living & dining areas with a fireplace
- State-of-the-art kitchen, designed for convenience or chef experience
- Vast outdoor lounge terraces with multiple seating areas & swing beds overlooking the Mara Triangle
- Lush garden spaces & secluded meditation areas
- Private pool



ALL VILLAS OFFER:

- King-size beds in every suite—for deep rest
- Spa-inspired bathrooms with made in Kenya amenities for a natural, sensory experience
- Air conditioning & Satellite WiFi
- Expansive terraces and outdoor lounges—multiple seating areas overlooking the Mara Triangle
- Fireplaces in living spaces—for warmth, atmosphere, and slow evenings by the fire
- State-of-the-art kitchens, fully equipped with premium coffee machines, because in Kenya, coffee is an art
- Yoga mats, hand weights & skip ropes—thoughtfully placed in every suite's closet for movement at your own pace
- Serene green spaces & meditation lookouts—woven seamlessly into the landscape



EXPERIENCES

EXPLORATION, CONSERVATION & HERITAGE

IMMERSIVE JOURNEYS THROUGH THE MARA’S LANDSCAPES, WILDLIFE, AND CULTURAL HERITAGE.

Signature Game Drives – Expert-led explorations of one of Africa’s richest ecosystems.

LOIRIEN Air Adventures – Private helicopter journeys to remote, awe-inspiring landscapes. *

Hot Air Balloon Safari – Sunrise over the Mara from a floating vantage point. *

Guided White Rhino Trekking – A rare, up-close encounter in our private sanctuary.

Nature & Wildlife Walks – A mindful exploration of LOIRIEN’s diverse ecosystems.

Avian Discovery Walk – A guided experience celebrating the Mara’s extraordinary birdlife.

Conservation Talks – An intimate behind-the-scenes look at Partakilat Conservancy’s preservation efforts.

Escarpment Biking Excursion – A thrilling way to navigate the shifting terrain.

Guided Conservation Runs – At your pace & Inspired by Kenya’s legacy of world-class runners.

Traditional Maasai Village & Market Visit – An immersive introduction to local culture.

Maasai Women’s Beading Workshop – Create traditional beadwork alongside local artisans.*

A CULINARY JOURNEY THROUGH THE WILD

FLAVORS THAT HOLD MEMORY. A SENSORY EXPERIENCE ROOTED IN TRADITION AND CRAFTED WITH PURPOSE.

Farm-to-Table Experience – Harvest organic produce and enjoy an al fresco meal prepared by our chefs.

Flavors of the Mara Cooking Class – Hands-on experience crafting dishes inspired by bold local flavors.

Kenyan Coffee Tasting & Rituals – A guided sensory journey through Kenya’s world-renowned coffee. (Available on request.)

Wine Tasting with our Sommelier – An expertly curated selection, paired with Mara-inspired flavors.

The Nyama Choma Experience – A time-honored open-fire barbecue under the stars.

Bush Dining – Sunrise or Sundown – A fully serviced, wild dining experience;

THE ART OF WELLNESS

DESIGNED FOR BALANCE, RESTORATION, AND DEEP CONNECTION TO SELF AND NATURE.

LOIRIEN Flow – Yoga & Breathwork – A bespoke practice attuned to the rhythm of the Mara—offered at sunrise, sunset, or whenever the moment calls.

Sound healing–Blends singing bowls with natural sounds for an immersive sound bath.

Yoga Retreats & Advanced Sessions – Led by Africa’s leading yogis.*

Signature Massages & Body Therapies – Tailored treatments to restore balance and release tension. (See wellness menu.)

Wellness Baths – A deeply restorative soak infused with essential oils and botanicals. (See wellness menu.)

Sleep Rituals & Pillow Selection – Curated nighttime rituals for deep, uninterrupted rest. (See Pillow Talk menu.)

LEISURE & PLAY

FOR EFFORTLESS ENJOYMENT, CREATIVITY, AND MOMENTS OF CONNECTION.

Classic Lawn Games – Badminton, cornhole, and more under the Mara sun.

Golf & Multi-Sports Simulator – A cutting-edge addition to the wild, perfect for any weather.

Archery Training – A hands-on introduction to Maasai hunting traditions.

Board & Card Games – A curated selection in every villa, perfect for quiet evenings.

Private Movie Night – Your villa, your cinema, tailored to your preferences.

Stargazing – Explore the African night sky.

Independent Painting & Sketching – A canvas, paints, and nature’s inspiration provided.

- Pre-booking required & additional fees may apply



THE DETAILS

LOCATION LOIRIEN Mara is perched on the Olololo Escarpment within Partakilat Conservancy, offering sweeping views over the Mara Triangle in the heart of Kenya’s Maasai Mara ecosystem.	CONSERVATION FEES Guest stays directly contribute to conservation efforts within Partakilat Conservancy. <ul style="list-style-type: none">In 2025, conservation fees are excluded from the booking rate and cover access to the Mara Conservancy at \$200 per adult and \$100 per child per day.From 2026 onwards, Partakilat Conservation fees will be included at \$80 per person per day, while Mara Conservancy park fees will be charged separately depending on the season.
GPS COORDINATES .4060° S, 34.9200° E	CHECK-IN & CHECK-OUT <ul style="list-style-type: none">Check-in: 12:00PMCheck-out: 12:00PMLate check-out afternoon departures with lunch incur 30% of total nightly accommodation cost. Must be arranged in advance & subject to availability (not available in premium season).
ALTITUDE 6,200 ft (1,890m) above sea level – Crisp air, cool nights, and uninterrupted horizons.	BOOKING & CANCELLATION POLICY <ul style="list-style-type: none">Deposit: A 20% non-refundable deposit is required to confirm a booking.Balance: The remaining 80% is due 45 days prior to arrival.Cancellation: Bookings canceled within 45 days of arrival are non-refundable.Booking Holds: Reservations can be held provisionally for up to 10 days.
SEASONS & CLIMATE <ul style="list-style-type: none">LOIRIEN is open year-round.Equatorial climate – Warm days, crisp nights, and clear skies year-round.Malaria free zone	MINIMUM STAY A minimum stay of 3 nights is required year-round, with a 4-night minimum during the festive season (Christmas & New Year period).
VILLAS & ACCOMMODATION <ul style="list-style-type: none">Loirien Villa – 9,440 sqft - 3 en-suite bedrooms, dining & entertainment areas, bar room, private cellar, library workspace, expansive terraces & gardens, infinity pool, steam & sauna. (wheelchair accessible)Naika Villa – 2,422 sqft - 2 en-suite bedrooms, dining & entertainment area, private garden and outdoor lounge.Kulaal Villa – 2,422 sqft - 2 en-suite bedrooms, dining & entertainment area, private garden and outdoor lounge.Total Maximum Guests: 18 across all villas.	POOL SAFETY Please note that no lifeguard is on duty at the pool. Guests are responsible for their own safety, and children must be supervised at all times.
VILLA AMENITIES <ul style="list-style-type: none">King-size beds with pure cotton linens & pillow menuState-of-the art kitchens and coffee machinesAir conditioning throughoutFireplaces in living spacesWriting desks in every roomDrinking water replenished dailySatellite WiFi	GUIDE ACCOMMODATION <ul style="list-style-type: none">Available upon request at 200\$ per person, per night.
BATHROOM AMENITIES <ul style="list-style-type: none">Deep soaking bathtubs (Loirien master suite, both Naika & Kulaal suites)Rainfall showers & spa-inspired en-suitesLocally made organic toiletries (shampoo, conditioner, soap, and body lotion)Luxury bathrobes, towels & slippersHairdryers available in all bathroomsYoga Mats, Skip ropes, hand weights available in every suite.	DINING & BAR <ul style="list-style-type: none">Private dining experiences – In-villa, on the terrace, or under the skies.Farm-to-table meals – Seasonal, locally sourced, crafted by private chefs.Bar & curated wine selection – Featuring premium spirits, wines, and craft cocktails.
LAYOUT & DESIGN <ul style="list-style-type: none">Loirien Villa – 877m² (9,440ft²), featuring a living & dining space, private bar, spa, office/library, TV lounge, cellar, and infinity pool.Naika & Kulaal Villas – 225m² (2,421ft²) each, including a living/dining space, outdoor lounges, floor-to-ceiling glass windows, and private gardens.	SPECIAL DIETARY REQUIREMENTS <ul style="list-style-type: none">All dietary needs catered for with advance notice (including celiac, vegan, pescatarian, and more).
	POWER & CONNECTIVITY <ul style="list-style-type: none">220V with 24-hour electricity.Universal charging stations in all villasSatellite Wi-Fi – Available throughout the property.Mobile Reception – Available via Safaricom network.
	CHILD POLICY <ul style="list-style-type: none">Children of all ages are welcome. Children under 5 years stay free of charge. Children between 5-15 pay 50% of the adult rate .For safety purposes, rhino trekking on foot is only available for guests aged 12 and above. Younger children may visit the rhino sanctuary by car and must remain inside the vehicles.Childminding services available on request.

CHILDREN'S ACTIVITIES <ul style="list-style-type: none">Animal tracking and bird watchingGuided nature walks around camp (safe, supervised, and educational)Beading or crafts with local community membersOutdoor movie nightsJunior moran learn how to build a fire and roast marshmallows,make your own bow and arrows.Beading or crafts with local community membersOutdoor movie nightsPaintingCookery & mixology classesSports with the local school children and the Loirien teamStargazing with a guide
POOL & FITNESS <ul style="list-style-type: none">Infinity pool – Available exclusively at Loirien Villa.Private pools (Naika & Kulaal) – Coming 2025.Yoga mats, hand weights & skipping ropes in every villa.Wellness & movement sessions available on request.
SPA SERVICES <ul style="list-style-type: none">In-villa spa treatments – Complementary massages, and bespoke wellness rituals available.
PHOTOGRAPHY & EQUIPMENT <ul style="list-style-type: none">Guided photography lessons & private photo shoots can be arranged at an additional cost with advance notice.
LAUNDRY <ul style="list-style-type: none">Complimentary laundry service provided daily.
TIPPING <ul style="list-style-type: none">Gratuities are at guests’ discretion in cash or by card at the end of stay.
TRANSFERS & ACCESS <ul style="list-style-type: none">Nearest Airstrip: Kichwa Tembo Airstrip (15 km / ~20-30 min private transfer).Alternative Airstrip: Mara Serena (1H transfer time)Private Charters & Helicopters – Can be arranged upon request.By Road from Nairobi: ~270 km (~6-7 hours by private 4x4).
SAFARI VEHICLES <ul style="list-style-type: none">Custom-built stretched Land Cruisers – Open and closed configurations.Vehicle amenities – Charging stations, blankets, hot water bottles, coolers stocked with refreshments and gourmet snacks, seats 7.
HEALTH & SAFETY <ul style="list-style-type: none">All guests are required to have fully comprehensive travel and medical insurance, covering: Trip cancellation, Medical expenses, Personal baggage & valuablesAdditionally, AMREF Flying Doctors cover is mandatory for all guests, ensuring emergency medical evacuation if needed.Malaria-Free Zone – Due to high-altitude setting (6,200 ft / 1,890m), no mosquitoes.Yellow Fever: A valid Yellow Fever vaccination certificate may be required depending on your country of travel.



A LIVING CONSERVATION STORY

Whether tracking rhinos through the bush, engaging in conservation initiatives, or simply choosing to stay in a place that reinvests in the land, your presence actively contributes to the protection, regeneration, and future of this extraordinary landscape.

Situated between the Mara Triangle and the Trans Mara region, Partakilat Conservancy is a protected wilderness safeguarding vital migration corridors, rare species, and the communities that call this land home. A model for conservation-led impact, it exists at the intersection of wildlife preservation, habitat restoration, and community empowerment.



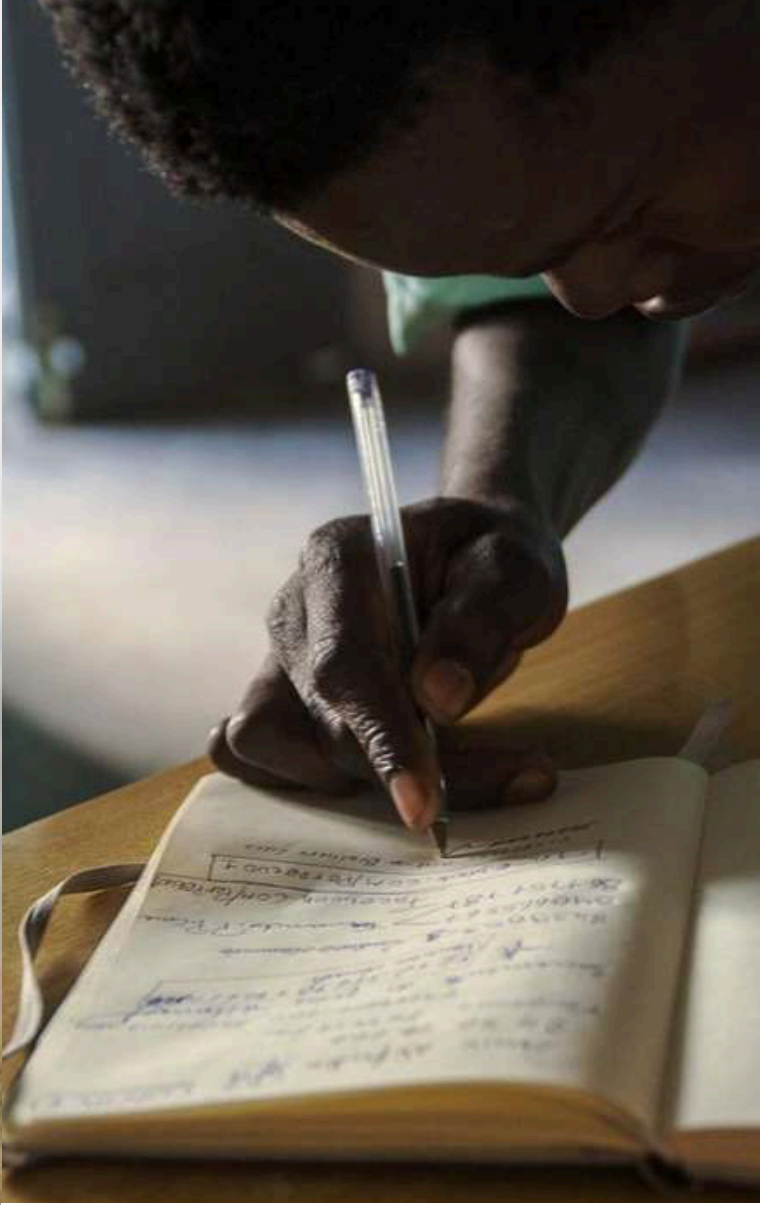
A HAVEN FOR ENDANGERED SPECIES

Protecting Africa's most vulnerable species.

SOUTHERN WHITE RHINO
A growing population, now eight individuals, including a newborn male.

ROAN ANTELOPE
Lost in the Mara for decades, this iconic species is returning to it's ancestral home.

GIANT PANGOLIN
The world's most trafficked mammal, protected through GPS tracking, habitat restoration, and anti-poaching efforts.



CONSERVATION IS COMMUNITY

Because conservation thrives, when communities flourish.

By supporting local education and healthcare, we transform classrooms into spaces of opportunity, provide essential care for families, and inspire young leaders to build brighter futures.

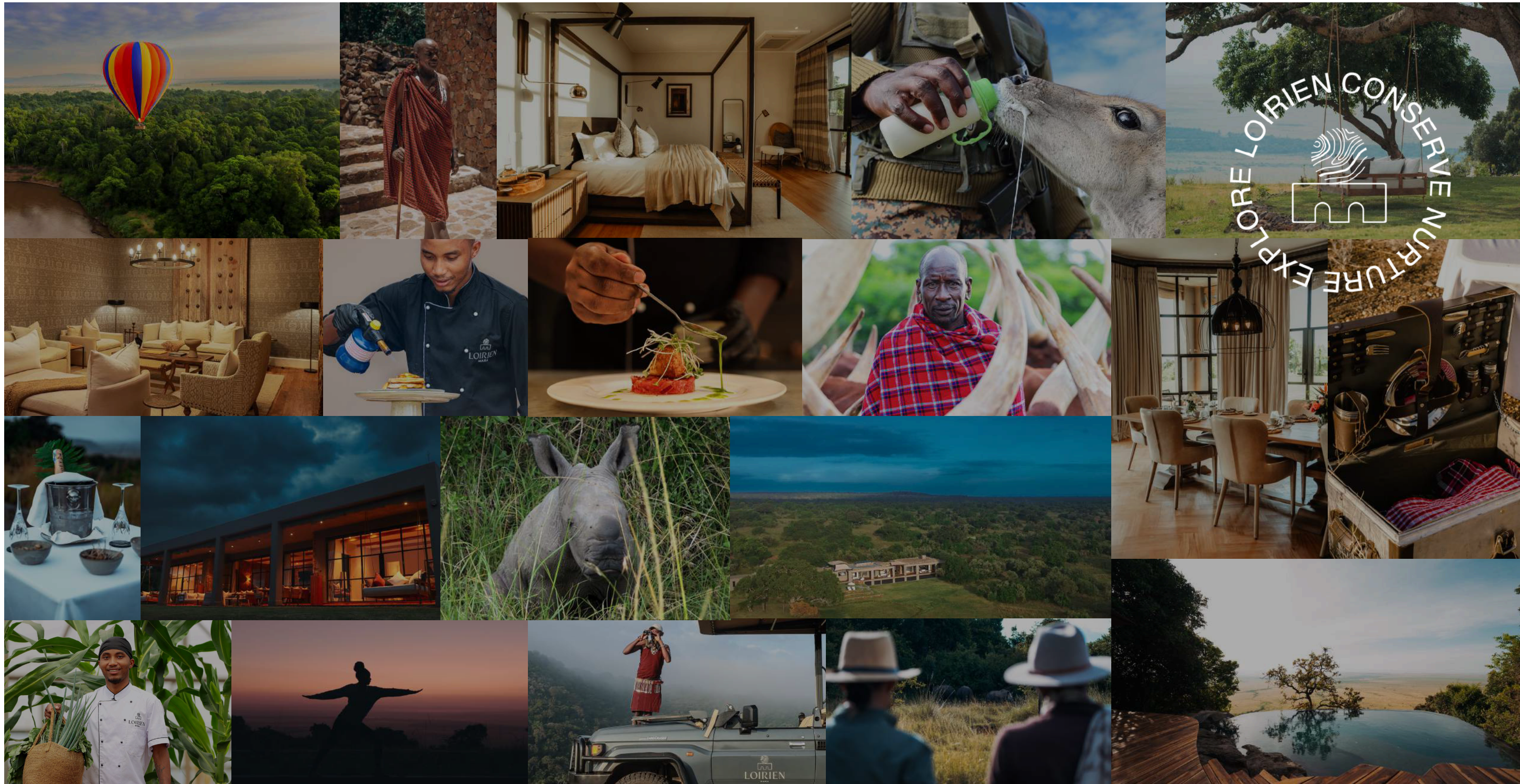
- 500+ students supported through Ilkiushun & Partakilat Schools.
- Healthcare access through the Partakilat Clinic
- Sustainable livelihoods that empower the Maasai & local community.



A SHARED MISSION



Through partnerships with Kenya Wildlife Service, the Mara Conservancy, the Wildlife Research and Training Institute, and a growing network of local and global collaborators, Partakilat is shaping the future of conservation—where wildlife, the ecosystem, and community thrive together.



2026 RATES

RATES VALID:
REGULAR SEASON : 6TH JAN - 15TH JUNE/1ST OCT - 20TH DEC
PREMIUM SEASON: 16TH JUNE - 30TH SEPT/ 21ST DEC - 05TH JAN 2027

	REGULAR SEASON		PREMIUM SEASON	
	USD RATE PER NIGHT	EACH ADDITIONAL GUEST	USD RATE PER NIGHT	EACH ADDITIONAL GUEST
LOIRIEN VILLA (UP TO 6 GUESTS)	\$ 12,480	\$ 2,080	\$ 13,680	\$ 2,280
NAIKA VILLA (UP TO 4 GUESTS)	\$ 6,570	\$ 1,280	\$ 7,355	\$ 1,400
KULAAL VILLA (UP TO 4 GUESTS)	\$ 6,570	\$ 1,280	\$ 7,355	\$ 1,400
EXCLUSIVE USE	\$ 21,520	\$ 1,280	\$ 23,560	\$ 1,400

2027 RATES

RATES VALID:
REGULAR SEASON : 6TH JAN - 15TH JUNE/1ST OCT - 20TH DEC
PREMIUM SEASON: 16TH JUNE - 30TH SEPT/ 21ST DEC - 05TH JAN 2028

	REGULAR SEASON		PREMIUM SEASON	
	USD RATE PER NIGHT	EACH ADDITIONAL GUEST	USD RATE PER NIGHT	EACH ADDITIONAL GUEST
LOIRIEN VILLA (UP TO 6 GUESTS)	\$ 12,360	\$ 2,060	\$ 13,860	\$ 2,310
NAIKA VILLA (UP TO 4 GUESTS)	\$ 6,440	\$ 1,235	\$ 7,390	\$ 1,385
KULAAL VILLA (UP TO 4 GUESTS)	\$ 6,440	\$ 1,235	\$ 7,390	\$ 1,385
EXCLUSIVE USE	\$ 21,010	\$ 1,235	\$ 23,560	\$ 1,385

FOR INQUIRIES AND RESERVATIONS

RESERVATIONS@LOIRIENMARA.COM
+254 (0) 798 371 180 (WHATSAPP AVAILABLE)
SAFARI PORTAL: LOIRIEN MARA
WETU: LOIRIENMARA

FOR A GLIMPSE INTO OUR WORLD
INSTAGRAM & TIKTOK : @LOIRIENMARA

WWW.LOIRIENMARA.COM
BEYOND THE MAP. A DISCOVERY.